

NC Commercial Galleries

continued from Page 49

Aliotta directly at 910/368-7351. Gallery Hours: Mon.-Sat., 11am-5pm. Contact: 910/575-5999 or at (sunsetrivergallery.com).

ALTERNATE ART SPACES - Ocean Isle Beach **Silver Coast Winery**, 6680 Barbeque Rd., Ocean Isle Beach. **Ongoing** - Art gallery featuring local artists, David McCune, Steven Schuman, and Suzanne C. Hunady, as well as daily tours, tastings and the art of wine making. Hours: Mon.-Sat., 11-6pm & Sun. 12-5pm. Contact: 910/287-2800 or at (www.silvercoastwinery.com).

Cary

Stonehaven Jewelry Gallery, 101 Ledge Stone Way, Stonecreek Village Shopping Center, corner of Davis Drive and High House Rd., Cary. **Ongoing** - Featuring custom design, jewelry repair, original oil paintings, limited edition prints, and fine art glass. Hours: Mon.-Fri., 10am-6pm & Sat., 10am-5pm. Contact: 919/462-8888 or at (www.stonehavenjewelry.com).

The Nature of Art Gallery, 106-D Colonades Way, Waverly Place Shopping Center, Cary. **Ongoing** - Featuring whimsical and eclectic artworks for interiors and gardens with a native flair. Hours: Mon.-Sat., 10am-6pm, except Wed. till 9pm. Contact: 919/859-6004.

Village Art Circle Studio & Gallery, 200 South Academy Street, Cary. **Ongoing** - Our gallery is located in Ashworth Village in historic downtown Cary, behind Ashworth Drug in the plaza, corner of Academy and Chatham Streets. We feature a wide variety of oil, watercolor and acrylic paintings by our award-winning studio artists as well as jewelry, glass and pottery. Studio artists are often working on current art projects during gallery hours. Come by and talk with the artists! Classes and workshops by gallery director, JJ Jlang, are frequently offered as well. Parking is available in the plaza in front of the gallery as well as on Chatham and Academy Streets. Hours: Wed.-Sat., 10am-4pm. Contact: e-mail to (villageartcircle@gmail.com) or at (www.villageartcircle.com).

Chapel Hill - Carrboro

Animation and Fine Art Galleries, University Mall, 201 S Estes Dr., Chapel Hill. **Ongoing** - Featuring contemporary works of art and animation art. Hours: Mon.-Sat., 10am-6pm. Contact: 919/968-8008 or at (www.animationandfineart.com).

Black Mountain Gallery, 1800 #9 E. Franklin Street, Eastgate Shopping Center, Chapel Hill. **Ongoing** - Featuring handwrought designer jewelry by artisans from throughout the United States. Hours: Mon.-Sat., 10am-6pm. Contact: 919/967-8101.

Blackwood Station Gallery, 6113 Hwy. 86N., Chapel Hill. **Ongoing** - Featuring functional & fine art, sculpture and fine art prints. Hours: Tue.-Fri., 11am-7pm; Sat., 10am-6pm, & Sun., noon-6pm. Contact: 919/968-1360.

Cameron's, University Mall, Chapel Hill. **Ongoing** - Featuring contemporary American crafts and pottery, folk art and functional art objects. Hours: Mon.-Sat., 10am-9pm & Sun., 1-6pm. Contact: 919/942-5554.

Chapellier Fine Art, 105 Arlen Park Drive, Chapel Hill. **Ongoing** - Fine, investment quality 19th & 20th century American art. Hours: Mon. - Fri. by appointment. Contact: 919/967-9960 or at (www.citysearch.com/rdu/chapellier/).

Dirt Road Gallery, 8218 Bright's Way, Chapel Hill. **Ongoing** - Featuring handcrafted items - including paintings, carvings, molas, textiles & fabrics, ceramics, beads and jewelry from West Africa, the Middle East, Central America, and the US collected over years of traveling. Hours: Sat. & Sun., 11am-6pm & by appt. Contact: 919/933-6999 or at (www.dirtroadgallery.net).

Ferns and Fancy Gallery, Fine Arts and Crafts, 15 Woodside Trail, Chapel Hill. **Ongoing** - Featuring tapestry, marbled panels, woven wearables, and marbled scarves by Trudy Thomson. Hours: by appt. Contact: 919/923-5022 or at (www.fernsandfancy.com).

N.C. Crafts Gallery, 212 W. Main St., corner of Weaver and West Main Sts., Carrboro. **Ongoing** - Offering a wide assortment of items handcrafted by North Carolina artisans. You'll find contemporary and traditional pottery, blown glass, wood, jewelry, metalwork, toys, folk art, garden sculpture, kaleidoscopes, baskets, fiber art and more. The Gallery currently carries the work of more

than 500 North Carolinians, from the mountains to the shore. The gallery also hosts two shows a month. Shows begin the first of each month and give the featured artist the opportunity to showcase an entire body of work. Hours: Mon.-Sat., 10am-6pm & Sun., 1-4pm. Contact: 919/942-4048 or at (<http://nccraftsgallery.com/>).

Studio 91 Fine Art Gallery, Meadowmont Village, Chapel Hill. **Ongoing** - Featuring works by Jean Abadie, Thomas Arvid, Dimitri Danish, Michael Flohr, Edward Lewis, and Fabian Perez. Hours: Mon.-Thur., 10am-6pm; Fri., 10am-8pm & Sat., 10am-5pm. Contact: 919/933-3700.

Charlotte Area

SouthEnd Gallery Crawl - From 5-8pm on the 1st Friday of each month.

Allison Sprock Fine Art, 600 Queens Rd., the gallery shares space with The Nichols Company in one of Myers Park's oldest houses, Charlotte. **Ongoing** - The gallery represents many well-known artists from all over the world. Some of the featured artists are very famous; others are emerging including: Andre Bludov, Constantin Chatov, Marc Chatov, Roman Chatov, Gee Gee Collins, Larry Davis, Noah Desmond, Margaret Dyer, Sabre Esler, Stephen Fry, Benjamin Hollingsworth, Linda James, Dimitri Kourouniotis, Stan Mullins, Anne Neilson, Becky Ollinger, Spencer Reid, Felice Sharp, Tracy Sharp, Louis St. Lewis, Elizabeth Stehling, Harry Stewart, Cate Wagoner, Karen Weihs, Alice Williams, Sean Williams, and Kathy Wochele. Hours: Mon.-Sat., 10am-6pm. Contact: 404/274-5829 or visit (www.allison-sprockfineart.com).

Anne Neilson Fine Art, 721 Governor Morrison Street, Suite 180, Charlotte. **Ongoing** - The gallery represents over 30 esteemed national and international artists, as well as works by noted painter and author Anne H. Neilson. The gallery is an outgrowth of Neilson's ever-growing popularity sparked by her Angels Series paintings and book. Hours: Mon.-Fri., 10am-5pm; Sat., 11am-3pm & by appt. Contact: 704/496-9181 or at (anneneilsonfineart.com).

Art House Studios, 3103 Cullman Ave., off 36th Street in the NoDa District, Charlotte. **Ongoing** - Featuring a complex of working studios by area artists. Hours: during Gallery Crawls and by appt. Contact: 704/577-4587 or e-mail at (arthouse_noda@earthlink.net).

Artists' Atelier Carolina, located in the Pentes Artworks Gallery & Studios bldg., 1346 Hill Rd., Charlotte. **Ongoing** - Featuring works by Jim Fales, Fay M. Miller, Jack Pentes, Betty G. Robinson, Gregory Weston, and Peggy Hutson Weston. Hours: by appt. Contact: 704/552-6200.

Awaken Gallery, 107 W Central Ave., Mount Holly. **Ongoing** - Our mission is to be there; to use these talents for the greater good. To show that we have been going in a circular pattern throughout history. It's time to learn from the past to create a better future. We need to get off that wheel we are running on in order to move forward. You don't need to speak a certain language or come from a particular place. This work speaks to all. Hours: Tue.-Sat., 11am-4pm. Contact: 980/277-8527 or at (www.awakengallery.com).

Carolina Fine Art, 300 S. Sharon Amity Road, Cotswold Village, Charlotte. **Ongoing** - Featuring a local artist-operated gallery selling original paintings, pottery and more. Hours: Tue.-Sat., 10am-5pm. Contact: 704/635-0226 or at (carolinafineart.com).

Charlotte Fine Art Gallery, 7510 Pineville-Matthews Road, located in South Charlotte's Carmel Village at the corner of Pineville-Matthews and Carmel Road, Charlotte. **Ongoing** - Original works of art from award-winning artists across the United States, as well as the Carolinas. Nationally and internationally-recognized artists in 2-and 3-dimensional fine art. Specializing in a wide array of media and styles represented: Representational, Impressionism, Expressionism, Abstraction / Paintings, Sculpture, Prints. Consulting Services for individual and corporate clients, as well as, private event opportunities. Hours: Tues 10am-4pm; Wed., 10am-9pm; Thur.-Sat., 10am-6pm or by appt. Contact: call 704/541-0741 or at (www.CharlotteFineArt.com).

Coffey and Thompson Gallery, 109 W. Morehead @ S. Tryon St., Charlotte. **Ongoing** - Oils by Richard Plasschaert, etchings by Gordon Allen, prints by Ralph McDonald, Bev Doolittle, G.

Harvey, Mort Kunstler, Don Troiani and Charles Frace. Hours: Mon.-Fri., 8:30am-5:30pm & Sat., 10am-2pm. Contact: 704/375-7232 or at (www.coffeyandthompson.com).

Dilworth Artisan Station, 118 E. Kingston Avenue, Charlotte. **Ongoing** - Dilworth Artisan Station houses more than 30 fine artists that maintain active studios at the Dilworth Artisan Station, a center for arts for more than the last two decades. Contact: (www.dilworthartisan.com).

Elder Gallery of Contemporary Art, 1520 South Tryon Street, Charlotte. **Ongoing** - We are thrilled to be the first gallery in North Carolina to offer fine glass art by nationally recognized artists Jon Kuhn, David Patchen and Marlene Rose. The gallery is also excited to introduce new contemporary two-dimensional artists, including Charles Williams and Grant Drumheller. Hours: by appointment only by decree of the mecklenburg County Building Development Commission. Contact: 704/370-6337 or at (www.eldergalleryclt.com).

Foster's Frame & Art Gallery, 403-A Old Statesville Rd. N, Huntersville. **Ongoing** - Featuring original paintings by local artists: Nellie Ashford - folk art, Edna Barker - landscape, Andrea Cook - Abstract/Fabric, Evelyn Kadir, Abstract/Musical, Carolyn Saine, landscape. Hours: Mon.-Fri., 10am-4pm, Sat. 10am-4pm. Contact: 704-948-1750.

Harris Holt Gallery, 1717 Kenilworth Avenue, Charlotte. **Ongoing** - Featuring watercolors, oil paintings and limited edition prints by Harris Holt. Hours: Mon.-Fri., 9:30am-5:30pm. Contact: 704/373-9090 or at (www.fostersframeanddartgallery.com).

Hodges Taylor Contemporary Gallery + Consulting Firm, 1414 S. Tryon Street (RailYard Building) in South End, Ste. 130, Charlotte. **Ongoing** - Celebrating our 40th Anniversary, the gallery represents contemporary artists of the southeast, including paintings, prints, photographs and sculpture. The gallery offers a public venue in uptown Charlotte for viewing artwork and serves as art consultants for collectors and businesses. Hours: Tue.-Sat., by appt. only. Contact: 704/608-2016 or at (www.hodgestaylor.com).

Hot Glass Alley, LLC., 438 Atando Avenue, Charlotte. **Ongoing** - Hot Glass Alley is a hot glass, art business, owned by artist, Jacob "Jake" M. Pfeifer. Pfeifer is a young, aspiring, American artist; among the next generation of craftsmen working with their hands; carrying forward glass making traditions that are thousands of years old. We offer a variety of glass vessels, small sculptures, functional pieces, seasonal gifts, and art glass objects in several unique series and forms; as well as one-of-a-kinds & corporate gifts. Hot Glass Alley offers a broad color palette and price range. They also offer "Make Your Own", "Date Night Make Your Own", and "Open Demonstration Night". Hours: Mon.-Sat., 10am-5pm & Sun., 11am-4pm. Contact: 980/209-9284 or at (www.hotglassalley.com).

House of Africa Gallery, 1215 Thomas Avenue, Charlotte. **Ongoing** - Featuring the area's largest selection of African art, including: masks, statues, carved artwork, handmade jewelry, paintings, plus traditional African musical instruments. Hours: Mon.-Sat., 11am-8pm. Contact: 704/376-6160.

Hughes Gallery, 2015 Ayrslay Town Blvd. @ N Kings Parade, Ste. 107-c, Charlotte. **Ongoing** - The gallery is a modern art gallery with a focus on sculpture, installation, works on paper, photography and painting. Hours: Mon.-Sat., 10am-6pm. Contact: 704/492-9934 or at (www.hughesgallery.artlogsites.com).

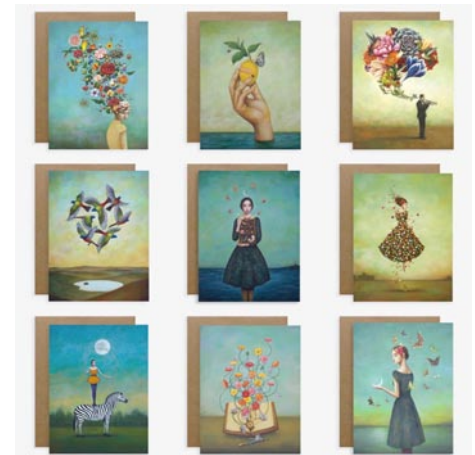


Work by Charles Basham

Jerald Melberg Gallery, 625 South Sharon Amity Road, near corner of Providence Road, next to restaurant Hotel Charlotte, Charlotte. **Jan. 11 - Feb. 22** - Continuum, featuring works by Charles Basham. The opening reception will be held at the gallery on Jan. 10, with the artist in attendance from 6-8pm. Coffee & Conversation with the artist will be held on Jan. 11, at 11am. The exhibit spans his four decades with the gallery. Basham received his BFA and MFA from Kent State University in his native state of Ohio, where he still resides on the family farm. "Continuum" features the artist's visually stimulating and emotionally charged landscapes inspired by the place he calls home. Throughout his career,

Basham has become more and more attuned to the subtle changes in weather and atmosphere. In his pastels and oil paintings, the energy and impact of light is realized in harmonized color whose saturation and temperature have been pushed and raised beyond previous limits. **Ongoing** - The gallery represents artists from all regions of the United States, Argentina and Spain, exhibiting paintings, prints, and sculpture. The gallery features solo and group exhibitions as well as consulting services for individual collectors, corporations and museums. Hours: Mon.-Sat., 10am-6pm. Contact: 704/365-3000 or at (www.jeraldmelberg.com).

KF Studios Handmade Marketplace, 202 S. Main Street, Davidson. **Ongoing** - Kristen Feighery is a self taught modern folk artist who's work takes heavy influence from her humble roots growing up in Southeastern Appalachian Kentucky. She is the owner of KF Studios Handmade Marketplace, where she represents a wide variety of local and regional artists. She is also the creator of The Downtown Davidson Arts Festival where she loves to introduce the community to new talent. She believes art can be anything handmade and it doesn't have to be financially out of reach. Hours: Tue.-Sat., 10am-5pm. Contact: 704/975-5478 or at (www.kfstudioshandmade.com).



Work by Duy Huynh

Lark & Key, online only, Charlotte. **Through Jan. 31** - "Kindred Spirits". The exhibit explores the interests and harmonious bonds between people, place and things (alive or inanimate). The exhibit features artwork from Janet Eskridge, Kim Ferreira, Duy Huynh, Ninalae Irani, Bridgette Guerzon Mills, Hannah Seng and Martha Wortley. **Ongoing** - Lark & Key offers a variety of artwork - online - pottery, jewelry from local and national artist. Contact: (<https://larkandkey.com/>).

LEXICON Gallery, 904 Pecan Ave., near Villani's and Cheat's Cheesesteak Parlor, on Pecan Ave., where Plaza Milwood, Chantilly and Elizabeth come together, Charlotte. **Ongoing** - Lexicon Gallery represents contemporary artists with collaborative spirit, with a focus on established visual artists (painters, sculptors, textiles, and mixed media artists), as well as several world-renowned fashion designers. We serve the art-curious, the art addict, and the art aficionado. Nurturing artistic success is our mission; igniting a passion for collecting art is our calling. Hours: Tue.-Thur., 10am-5pm; Fri., 10am-6pm; & Sat., 11am-5pm. Contact: 704/649-5060 or at (lexicon-galleryclt.com).

Maddi's Gallery, 1530 East Boulevard, Charlotte. Named "Top Retailer of American Craft in the United States for 2009" by The "Niche Magazine". **Ongoing** - Featuring fine contemporary craft by more than 160 national artists; specializing in Southern folk art with paintings, pottery and carvings by many of the South's most notable folk artists. Hours: Mon.-Fri., 10am-7pm; Sat., 10am-6pm & Sun. noon-5pm. Contact: 704/332-0007.

Nancy Couick Studios and Gallery, 10100 Park Cedar Dr., Suite 188, Charlotte. **Ongoing** - Gallery features works by New Orleans artist: Michael Smiraldo, regional artists: Nancy Smith Couick, Sharron Burns, Susan Hinrichs, Charlotte Fairman, Mary Ellen Wilkerson, Vivian Carroll and others. Hours: Mon.-Fri., 10am-5pm (except Tues. 1-9pm) and Sat. & Sun. by appt. Contact: 704/541-6944 or at (www.nancycouick.com).

Nine Eighteen Nine Studio Gallery, 700 North Tryon Street, Charlotte. **Through Jan. 4** - "Crossing Borders: We Are All Immigrants," curated by Carl Heyward, Akiko Suzuki, Mikel Frank, and Joanne Rogers. The theme of crossing borders has many interpretations. Artists interpret this theme from its literal meaning all the way to emotional and psychological significance. Exhibits are taking place in NYC and NC. "Crossing Borders," is an international art exhibition which delves into how borders shape perceptions of identity, safety, and belonging. From geographic demarcations to psychological and cultural boundaries, the exhibition explores themes of division, connection, and transformation. Through diverse mediums - photographs, paintings, monumental sculptures,

continued on Page 51