

# SC Institutional Galleries

## Allendale

**Salkehatchie Arts Center**, 939 N. Main St., Allendale. **Ongoing** - Featuring a retail store offering works by artists from the Salkehatchie region including Allendale, Bamberg, Barnwell, Colleton, and Hampton Counties. Hours: Tue.-Sat., 10am-5pm. Contact: 803/584-6084 or at ([www.salkehatchie-arts.com](http://www.salkehatchie-arts.com)).

## Aiken

**Aiken Center for the Arts**, 122 Laurens St., SW, Aiken. **Aiken Artist Guild Gallery, Dec. 2 - 29** - Featuring Aiken artist, Ron Rapport, who will present a solo exhibit of his works. A reception will be held on Dec. 8, from 6-9pm. Hours: Tue.-Fri., 9:30am-5:30pm. Contact: 803/641-9094 or at ([www.aikencenterforthearts.org](http://www.aikencenterforthearts.org)).

## Anderson

**Anderson Arts Center**, located in the Arts Warehouse, 110 Federal Street, downtown Anderson. **Through Dec. 30** - "Contemporary Christmas Exhibition," featuring artworks by Jane Doyle, Philip Gott, Diana Gurri, Patricia Kilburg, Barbara Stitt and Carole Tinsley. Hours: Tue.-Fri., 9:30am-5:30pm. Contact: 864/222-2787 or at ([www.andersonartscenter.org](http://www.andersonartscenter.org)).

**Bay3 Artisan Gallery**, located in the Arts Warehouse, 110 Federal St., Anderson. **Ongoing** - Featuring fine art paintings, jewelry, pottery and photography by Jos Acaba, Lynne Burke, Marion Carroll, Nathan & Amy M. Kuhl Cox, Liz Smith-Cox, John Davis, Jamie Davis, Ann Heard, Ruth Hopkins, Kate Krause, Brian MacCormack, Rosemary Moore, Johnny Nutt, Nancy Perry, Mary Lynn Pond, Diann Simms, Chris Troy, and Armi Tuorila. Co-sponsored by the Anderson Arts Center. Hours: Tue.-Fri., noon-5pm, & Sat., 10am-1pm. Contact: 864/716-3838 or at ([www.andersonartscenter.org](http://www.andersonartscenter.org)).

## Beaufort Area

**Gallery @ ARTworks**, home of the Arts Council of Beaufort County, 2127 Boundary St., near K-Mart, in Beaufort Town Center, Beaufort. **Through Dec. 31** - "The Story Quilts of Dorothy Montgomery". Montgomery shares her collection of story quilts, her handiwork that tells many important histories so well: The Fox and the Crow; How Ragtime Left the Delta; Allelujah and how she got her name; the Quilt begun with Found Objects; Gullah baptisms and "spiritual pillows"; and many more of the colorful figures in Montgomery's life and knowledge. She is adept at pulling the threads of textile arts and symbolism through hearts and time. **Ongoing** - Featuring the work and creative processes of new and emerging artists. Hours: Mon.-Fri., 10am-5pm. Contact: 843-379-2787 or at ([www.beaufortcountyarts.com](http://www.beaufortcountyarts.com)).

**Beaufort Art Association Gallery**, 913 Bay Street, across the street from the Clock Tower, Beaufort. **Ongoing** - New works by more than 90 exhibiting members of the Beaufort Art Association Gallery - exhibits and featured artists change every six weeks. In addition to framed paintings in a variety of media, the gallery offers prints, photographs, unframed matted originals, jewelry, sculpture, ceramics and greeting cards. Hours: Mon.-Fri., 10am-5pm. Contact: 843/521-4444 or at ([www.beaufortartassociation.com](http://www.beaufortartassociation.com)).

**York W. Bailey Museum**, Penn Center, St. Helena Island. **Through Dec. 31** - "Songs of My People," featuring an exhibit of works by renowned artist Luther Vann of Savannah, GA. A student of the masters of the Harlem Renaissance, Vann's artistic expressiveness encompasses virtually every visual medium—painting, photography, sculpture, and digital creations. Hours: Mon.-Sat., 11am-4pm. Contact: 843/838-2432 or at ([www.penncenter.com](http://www.penncenter.com)).

## Bluffton

**Society of Bluffton Artists Gallery/Learning Center**, 8 Church Street, corner of Calhoun and Church Street, Bluffton. **Through Dec. 17** - "Treasures of El Yunque: Puerto Rico's Rain Forest," featuring watercolors by Barbara Z. Pecce. **Ongoing** - Featuring works in a variety of mediums by over 80 area artists, with all work moderately priced. Changing shows every six weeks. Hours: Mon. 11am-3pm & Tue.-Sat., 10am-5pm. Contact: 843/757-6586.

## Camden

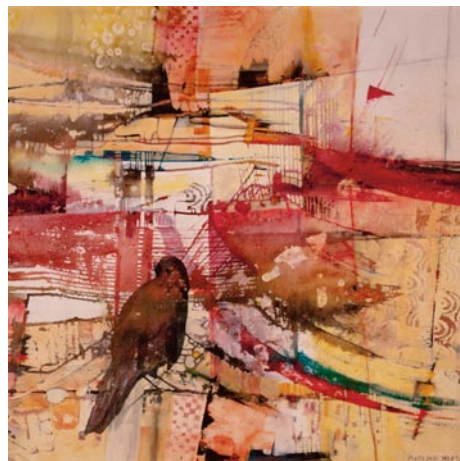
**Bassett Gallery**, Fine Arts Center of Kershaw County, 810 Lytleton St., Camden. **Through Dec. 2** - "The Equine Triumvirate". **Dec. 8 - Jan.**

**11, 2012** - "Camden Art Association Members Show". Hours: Mon.-Fri., noon-6pm. Contact: Kristin Cobb at 803/425-7676, ext. 306 or at ([www.fineartscenter.org](http://www.fineartscenter.org)).

## Charleston

**Avery Research Center for African History and Culture**, at the College of Charleston, 125 Bull St., Charleston. **Denmark Vesey Conference Room, Ongoing** - "KABOH: A Legacy of Twelve." Charleston Quilter Dorothy Montgomery made "KABOH" in honor of the "Priscilla" story. The quilt was in the possession of Dr. Joseph Opala who donated it to the Avery Research Center in July, 2008. **Corridor (2nd Floor), Ongoing** - "Esau Jenkins: A Retrospective View of the Man and His Times" This exhibition was developed in 1991 by the Avery Institute. After its display in Charleston it traveled throughout the state of SC under the auspices of the State Museum Traveling Exhibition Program. Consisting of (15) panels measuring 24" x 36", the exhibit chronicles the myriad of activities Mr. Jenkins was intimately involved in. Additionally, it highlights his leadership skills as a conscious and compassionate community activist, organizer, entrepreneur and Civil Rights leader. Hours: Mon.-Fri., 10am-5pm & Sat., noon-5pm. Admission: by donation. Contact: 843/953-7609 or visit ([www.cofc.edu/avery](http://www.cofc.edu/avery)).

**Charleston Artist Guild Gallery**, 160 East Bay St., Charleston. **Dec. 1 - 31** - "Teapots and China," featuring works by Kenneth Hanger. The exhibit will feature work from a recent trip to China and of course work of his wife's tea sets. A reception will be held on Dec. 2, from 6-8pm. **Ongoing** - Featuring an exhibit of works by over 73 plus members of CAG who display a wealth of talent in different media including, oils, acrylics, pastels, watercolors, photography, printmaking & sculpture. The Gallery is also home for the CAG office. Hours: Mon.-Sat., 11am-6pm. Contact: 843/722-2454 or at ([www.charlestonartistguild.com](http://www.charlestonartistguild.com)).



Work by Jane Martin, SCWS Exhibit

**City Gallery at Waterfront Park**, 34 Pringleau Street, Charleston. **Upper & Lower Level Galleries, Through Dec. 31** - "SC Watermedia Society's 34th Annual Exhibition". The exhibit features original paintings from 62 award winning artists from across the state, consisting of watercolor, acrylic, colored pencil and any water-based media. This year's artwork will be curated by a panel at the City Gallery, and then 30 artists will win awards, which will be judged by Florida artist Mary Alice Braukman. Hours: Tue.-Fri., 10am-6pm and Sat. & Sun., noon-5pm during exhibits. Contact: Erin Glaze at 843/958-6484 or (<http://citygalleryatwaterfrontpark.com>).

**Gibbes Museum of Art**, 135 Meeting Street, Charleston. **Main Gallery, Through Jan. 8, 2012** - "Breaking Down Barriers - 300 Years of Women in Art". Beginning with Henrietta Johnston, the first female professional artist in America, and continuing to the present, Breaking Down Barriers examines the challenges faced by women artists over the past 300 years. Drawn from the museum's permanent collection, the exhibition highlights a number of extraordinary women working in a variety of media and artistic styles. **Rotunda Galleries, Through Jan. 8, 2012** - "Camera Works - Masters in Photography". This exhibition features twentieth-century, masters of photography selected from the Gibbes permanent collection and local private collections including works by Alfred Stieglitz, Margaret Bourke White, Dorothea Lang, Alfred Eisenstaedt, Berenice Abbott, and many more. **First, Second and Third Floor Galleries, Ongoing** - "The Charleston Story". Drawn from the museum's permanent collection, this exhibition highlights significant people, places, and periods from Charleston's beginning as a British colony, through the American Revolution, the later ravages of the Civil War, and culminating today as a culturally diverse and dynamic community. **Ongoing** - "Hands On!" This exhibit features works of art selected from the Gibbes Museum of Art's touch collection.

**Museum Shop** - Now offering the inventory of the Tradd Street Press, reproductions of works by Elizabeth O'Neill Verner among other exhibit related art objects. Hours: Tue.-Sat., 10am-5pm & Sun., 1-5pm; closed Mon. Admission: Yes. Contact: 843/722-2706 or at ([www.gibbesmuseum.org](http://www.gibbesmuseum.org)).

**Halsey Institute of Contemporary Art**, The Marion and Wayland H. Cato Jr. Center for the Arts, College of Charleston School of the Arts, 161 Calhoun St., Charleston. **Through Dec. 9** - "Hamid Rahmanian - Multiverse," and "Tanja Softić - Migrant Universe". The exhibits features works by two artists, working through different media, presenting visualizations of their experience as immigrants. The "Multiverse" exhibition is an excerpt from the graphic novel "The Magnificent Book of M". An allegorical tale, the book intertwines reality, dream and fantasy to present to the reader a dissection of what it feels like to be an immigrant. The "Migrant Universe" series acts as a visual poem about identity and the worldview of an immigrant. Tanja Softić's prints, drawings, and paintings combine images of natural and man-made structures with drawings based on appropriated visual material: medical and botanical illustrations, maps and charts, manuscript illuminations, and comic art. Her work addresses concepts of cultural hybridity, chaos, and memory. Hours: Mon.-Sat., 11am-4pm. Contact: Mark Sloan at 843/953-4422 or at ([www.halsey.cofc.edu](http://www.halsey.cofc.edu)).

**Karpeles Manuscript Museum**, 68 Spring Street, corner of Spring & Coming Streets, Charleston, in the former St. James Methodist Church, founded in 1797. **Ongoing** - Featuring historically important documents from our permanent Charleston collection. Recently added to the Permanent Collection - a special and unique exhibit of Egyptian Stone Carvings dating from 1492 BC. Free parking and free admission. Hours: Tue.-Sat., 11am-4pm. Closed on holidays. Contact: 843/853-4651.

**Redux Contemporary Art Center, featuring Redux Studios**, 136 St. Philip Street, Charleston. **Dec. 8 - Jan. 14, 2012** - "Home Again, Home Again: Featuring new works by Carmela Laganse, Sean Riley & Allison Reimus". A reception will be held on Dec. 8, from 6-9pm. These three artists, with seemingly remote inspirations, share interests in the way that humans choose to fashion interior surroundings, and the reactions and emotions that these surroundings incur. Beautiful, rich textures and familiar shapes, patterns and forms become curious and puzzling, perhaps even threatening under closer inspection. Each artist plays with the form and function of interior spaces, and the subsequent feelings and psychological states that are created by these spaces. On Dec. 8, at 5pm, Allison Reimus and Sean Riley will give a lecture on their work. On Dec. 10, at 3pm, Carmela Laganse will give a lecture about her work. Hours: Tue.-Thur., noon-8pm, Fri.-Sat., noon-5pm during exhibitions, or by appt. Contact: 843/722-0697 or at ([www.reduxstudios.org](http://www.reduxstudios.org)).



Work by Vanessa Kauffmann

**Saul Alexander Foundation Gallery**, Charleston County Public Library, 68 Calhoun St., Charleston. **Dec. 1 - 31** - "Spirit of the Lowcountry," featuring works by Vanessa Kauffmann. The exhibit displays photographs which the artist says were inspired by "the challenge of identifying, extracting, and then communicating wonderful things." Hours: Mon.-Thur., 9am-8pm; Fri. & Sat., 9am-6pm; and Sun. 2-5pm. Contact: Frances Richardson at 843/805-6803 or at ([www.ccpl.org](http://www.ccpl.org)).

**The Charleston Museum**, 360 Meeting Street, Charleston. Founded in 1773, is America's first museum. **Ongoing** - Featuring the most extensive collection of South Carolina cultural and scientific collections in the nation, it also owns two National Historic Landmark houses, the Heyward-Washington House (1772) and the Joseph Manigault House (1803), as well as the Dill Sanctuary, a 580-acre wildlife preserve. Admission: Yes. Hours: Mon.-Sat., 9am-5pm & Sun., 1-5pm. Contact: 843/722-2996 or at ([www.charlestonmuseum.org](http://www.charlestonmuseum.org)).

ALTERNATE ART SPACES - Charleston **Ashley River Tower**, Public area at Medical University of South Carolina, Charleston. **Ongoing** - "Contemporary Carolina Collection @ Ashley River Tower," featuring the largest collection of original, contemporary South Carolina art on permanent display, including

885 works by 53 talented artists, sculptors and photographers in South Carolina. Artists included are: Lucille Akinjobe, Jack Alterman, Thomas Blagden, Jr., Carl Blair, Patti Brady, Keith Brown, Julia Cart, Eva Carter, Jocelyn Châteauevert, Lese Corrigan, Townsend Davidson, Linda Fantuzzo, Buddy Folk, Squire Fox, Mary Edna Fraser, Cassandra Gillens, Anthony Green, Jon Holloway, Ann Hubbard, Lisa Salosaari Jasinski, Erik Johnson, Kim Keats, Arianne King Comer, Kit Loney, Paul Mardikian, Nancy Marshall, Paul Matheny, John McWilliams, Sue Middleton, Marge Moody, Gordon Nicholson, Jane Nodine, Marcelo Novo, Karin Olah, Matt Overend, Rick Rhodes, Ed Rice, Molly B. Right, Susan Romaine, Kristi Ryba, Virginia Scotchie, Laura Spong, Tom Stanley, Christine Tedesco, Colleen Terrell, Leo Twiggs, Tjelda Vander Meijden, Mary Walker, Sue Simons Wallace, Joe Walters, Sam Wang, Enid Williams, Manning Williams, and Paul Yanko. Hours: daily, 8:30am-5pm. Contact: Kathleen Ellis, Director of National Communications, MUSC, at 843/792.5602 or e-mail at ([ellisk@musc.edu](mailto:ellisk@musc.edu)).

**Charleston City Market**, Building B, Charleston. **Fri. & Sat., 7-10:30pm** - "Art in the Evening," presented by the Charleston City Market Preservation Trust LLC. A week-end art show featuring everything from folk art to fine art by local residents. To add to the charm, a concert of lovely classical guitar music and other featured musicians appear at the market. Building B of the Charleston city market. Admission is FREE. Contact: call 843/327-5976.

**Gaillard Municipal Auditorium**, 2nd floor lobby, 77 Calhoun Street, Charleston. **Through Dec. 8** - "Abstract Painting 101: An Introduction to Francina's Curvaceousness," featuring a solo exhibition of oil on canvas by North Charleston artist, Francina Smalls-Joyner. Hours: Mon.-Fri., 9am-5pm. Contact: the Office of Cultural Affairs at 843/724-7305 or at (<http://www.charlestonarts.sc/>).

**New Sciences and Mathematics Building**, College of Charleston, 2nd Floor, 202 Calhoun Street, Charleston. **Through Mar. 3, 2012** - "From the Moon: Mapping & Exploration". The exhibit addresses our visual perceptions of the Moon, from Earth and from space, and demonstrates how advances in optical technologies have increased our understanding over time. This is an exhibition exploring our relationship to the Moon through the lens of the sciences. From Galileo's first observations to today's powerful telescopes, this exhibition will include a broad range of man's attempts at mapping and understanding lunar history. A key component will be NASA's documentation of the Apollo lunar landings as well as current research and missions. The centerpiece of the exhibition will be a Moon rock collected during the Apollo 15 mission from June to August 1971. Hours: N/A. Contact: Mark Sloan at 843/953-4422, at ([www.halsey.cofc.edu](http://www.halsey.cofc.edu)) or at ([www.moon.cofc.edu](http://www.moon.cofc.edu)).

**The Old Slave Mart Museum**, 6 Chalmers Street, Charleston. **Ongoing** - The Museum recounts the story of Charleston's role in this interstate slave trade by focusing on the history of this particular building and site and the slave sales that occurred here. Hours: Mon.-Sat., 9am-5pm. Contact: The Office of Cultural Affairs at 843/958-6467 or at (<http://www.charlestonarts.sc/>).

## Chesnee

**Carolina Foothills Artisan Center**, 124 W. Cherokee Street, intersection of Hwy. 11 & Hwy. 221, Chesnee. **Ongoing** - Featuring original works by over 60 North & South Carolina artists, including pottery, decorative and functional; paintings in oil, watercolor, acrylic and mixed media; textiles and fiber art; carved wood; jewelry; dolls; brooms; monotypes; pewter sculpture; mosaics; glass, stained, torched and fused; photography; baskets; fine wood furniture; books and cards. **Also** - Offering educational programming for all ages, from art classes to cultural events. Hours: Mon.-Sat., 10am-5:30pm. Contact: 864/461-3050 or at ([www.cfac.us](http://www.cfac.us)).

## Clemson Area

**MFA Gallery**, G-29 Lee Hall, Clemson University, Clemson. **Through Dec. 2** - "The Physicality of Fear BFA Exhibit," featuring works by John Searcy. A reception will be held on Dec. 1, from 6-8pm. **Dec. 5 - 9** - "Fresh Produce BFA Exhibit," featuring works by Tyler Fortsch. A reception will be held on Dec. 8, from 6-8pm. Hours: Mon. Thur., 9am-4:30pm. Contact: Contact: 864/656-3883 or at ([www.clemson.edu/caah/leegallery/](http://www.clemson.edu/caah/leegallery/)).

**Rudolph E. Lee Gallery**, Center for the Visual Arts at Clemson University, Lee Hall, Clemson University, Clemson. **Dec. 5 - 16** - "Spatially Considered, MFA Exhibit," featuring works by

*continued on Page 37*