

NC Arboretum in Asheville, NC

continued from Page 21

time Fairfield Designer, a National Artisan for Bernina and Professional Quilter's 2004 Teacher of the Year.

Stori's writing and work have appeared in scores of quilt magazines and publications. Her award-winning pieces have been widely exhibited both nationally and internationally. She has appeared on HGTV's "Simply Quilts" and "Sew Perfect" numerous times, and an entire episode of Fon's & Porter's "Love of Quilting" featured her beaded quilts. She designed the Mary Stori Collection for Kona Bay Fabrics, and her own line of stencils for Quilting Creations.

"When I work with fiber and beads, time disappears," say Stori. "I'm in my own world, one that requires patience, focus, thirty plus years of practice, and

good light!"

"Most of us experience the necessary grind of grocery shopping, preparing meals, housekeeping, and paying bills, to name a few. What's frustrating about these tasks is that they need to be repeated over and over and over again. How many creative ways are there to scrub a toilet?"

Stori continues, "However when I create my art, it remains tangible. I can see progress, the results of my efforts won't disappear like last night's pasta salad! Sharing my work with others is an even bigger reward."

For further information check our NC Institutional Gallery listings, call the Arboretum at 828/665-2492 or visit (www.ncarboretum.org).

The 66th Annual Craft Fair of the Southern Highlands Takes Place in Asheville, NC - Oct. 17 - 20, 2013

Join us for the 66th Annual Craft Fair of the Southern Highlands at the US Cellular Center in downtown Asheville, NC, Oct. 17 - 20, 2013. The event takes place Thur.-Sat., 10am-6pm and Sun., 10am-5pm.



Work by Cindy Riccardelli. Copyright Southern Highland Craft Guild

Nearly 200 juried artists of the Southern Highland Craft Guild will be selling works of clay, metal, wood, jewelry, fiber, paper, natural materials, leather and mixed media. With styles ranging from traditional to contemporary, the Fairs showcase the rich talent, diversity and craft mastery of Guild members.

The Craft Fairs have a proud tradition and history of excellence by representing the Southern Highland Craft Guild, a non-profit organization formed in 1930. The Fairs began in 1948 as a way to provide a regional market for the mountain craftspeople. Since that time, the Craft Fairs have set the standard for fine craft shows across the country. Each year in October craft collectors and gallery owners from across the country come to Asheville to see the show. They are joined by western North Carolina residents and tourists to the area who appreciate the quality and history of the show, knowing it is an ideal destination for shopping and inspiration. Nearly 20,000 visitors to the Fairs each year invest in regional and local economies while supporting artists working in the Appalachian mountains, and by spending a summer or fall weekend in beautiful Asheville.

In addition to providing a retail market for juried members, the Guild also hosts craft demonstrations during the Fairs. A strong part of the Guild's mission is to educate the public about the history of crafts in this region, various craft techniques, and an appreciation for fine crafts. This October visitors have the opportunity to see artists using traditional methods of handmade craft like George McCollum weaving a white oak basket, beginning with splints he has harvested from the tree, Betsy Morrill's innovative deconstructed screen-printing on fabric, and Mi-

chael Lalone at the potters wheel. Outside the US Cellular Center visitors will be greeted by natural dyeing and blacksmithing demonstrations.

Craft demonstrations are a highlight at the Craft Fair of the Southern Highlands. Watching and interacting with highly skilled craftspeople as they create is entertaining and educational. Throughout the show, visitors will have the opportunity to observe works by over 200 members of the Southern Highland Craft Guild and to learn about their inspiration and methods.

October Schedule of Demonstrations include:

Mike Lalone of Murphy, NC, will demonstrate techniques such as throwing, trimming and assembling clay in the ceramic process. He has been a member of the Southern Highland Craft Guild since 2009.

George McCollum of Athens, TN, will demonstrate creation of a white oak basket from tree to completed basket, showing all stages from harvesting splints to weaving. He has been a member of the SHCG since 1986.



Betsy Morrill giving a demonstration. Copyright Southern Highland Craft Guild

Betsy Morrill of Burnsville, NC, will demonstrate the surface design technique of layering various textures and colors through deconstructed screen-printing on fabric. She has been a member of the SHCG since 2007.

Dede Styles of Swannanoa, NC, will demonstrate spinning and the traditional craft of using natural plant dyes to color yarn outside the US Cellular Center. She has been a member of the Southern Highland Craft Guild since 2000.

Guest craftsperson Lenny Moore will be outside the US Cellular Center at the forge greeting fair-goers while demonstrating the craft of using heat to transform metal into art.

Beginning on Friday during each Craft

continued above on next column to the right

Fair, mountain musicians perform live on the arena stage. Since the first fair in Gatlinburg, TN, in 1948, the music of the area has been woven into the fabric of the Craft Fair experience. From old time to bluegrass, this tradition is kept alive today.

The music schedule includes:

Friday, Oct. 18, at 11am - Sherri Lynn and Mountain Friends. This group plays high energy American swing-grass. This is a strong team that combines fine musicianship and pure joy, giving audiences a highly entertaining show.

At 1pm - Hot Duck Soup. Kazoos, slide whistles, banjos, guitars, ukes, an antique cornet, washtub bass, and the Cacophonium! Hot Duck Soup plays old tunes like you've never heard 'em played.

At 3pm - Timberline Smooth folk harmonies characterize this band featuring guitarist Gene Holdway, a traveling bluegrass troubadour with 30 years experience.

Saturday, Oct. 19, at 11am - Southern Crescent Bluegrass. Asheville area musicians, led by Tommy Thompson, specializing in traditional bluegrass standards.

At 1pm - Split Rail. Split Rail provides a great continuity of sound that can only be achieved from years of playing together. Strong vocal harmony is their trademark.

At 3pm - Moore Brothers Band. Led by a duo of young brothers from Hickory, NC, this band plays bluegrass and gospel.



Whitotop Mountaineers. Copyright Southern Highland Craft Guild

Sunday, Oct. 20 at 11am - Whitotop Mountaineers. Martha Spencer and Jackson Cunningham perform the beautiful and unique sounds of traditional South-west Virginia oldtime music.

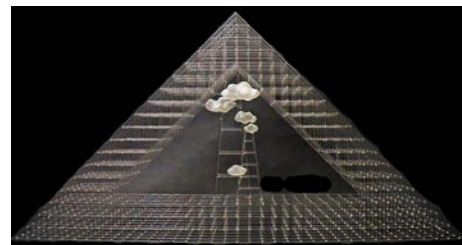
At 1pm - Carol Rifkin and Paul's Creek. Creek plays original and traditional mountain music, their fine harmonies

Bender Gallery in Asheville, NC, Features Works by Eunsuh Choi & Adam Waimon

The Bender Gallery in Asheville, NC, will present *Through the Future, Brightly*, an exhibition of works by acclaimed Korean born glass sculptor Eunsuh Choi and rising star Adam Waimon, on view from Oct. 4 through Dec. 31, 2013. A reception will be held on Oct. 4, from 5-8pm.

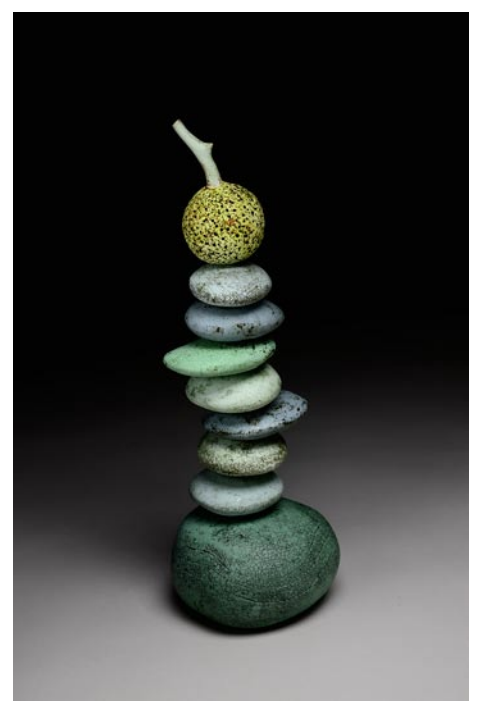
The exhibition examines how limitations must be surmounted on the path to artistic expression and celebrates the artists' future aspirations and accomplishments.

Eunsuh Choi's work is influenced by her experience as a young woman emigrating to the United States and the obstacles she encountered along the way. She states, "I am interested in portraying the human aspiration in life with organic forms from the new perspective I had about myself in a foreign country".



Work by Eunsuh Choi

The flameworked sculptures juxtapose grid-like structures consisting of clear thin rods of borosilicate glass which enclose imagery of ladders and puffy clouds. Choi incorporates these familiar objects as formal motifs in her work. The rigid structures represent the barriers that we



Work from Byers McCurry Studio. Copyright Southern Highland Craft Guild

blending in an old timey style heavily influenced by the elders of the region, family, friends and diverse interests.

At 3pm - Buncombe Turnpike. Featuring songwriter, playwright and longtime bandleader Tom Godleski, Buncombe Turnpike boasts original songs and the banjo picking of teenage sensation Seth Rhinehart.

Jan Davidson, Director, John C. Campbell Folk School stated, "Creating a world in which craft and other native talents can flourish - this is the Guild's legacy. The craftspeople of Southern Appalachia are always aware of tradition and forever renewing themselves from the old sources of nature, family, spiritual life and the desire to share one's gifts with others."

The Southern Highland Craft Guild is a non-profit, educational organization established in 1930 to bring together the crafts and craftspeople of the Southern Highlands for the benefit of shared resources, education, marketing and conservation. The Craft Fairs are one of the ways in which the Guild fulfills its mission.

Admission for adults is \$8, children under 12 are free, and group discounts are available.

For further information check our NC Institutional Gallery listings, call the Guild at 828/298-7928 or visit (www.craftguild.org).

face all around us, while images of clouds represent our aspirations and goals in life. In the words of the artist, ladders are man-made tools used to assist or aid an individual, to physically raise them to a higher level that one would be incapable of achieving on their own.

Choi's piece, *Convergence of Barrier IV* is a large geometric sculpture consisting of precise, angular grid lines meeting at a single apex forming a triangular structure. Inside, two ladders stretch up and into the clouds. The *Limited Barrier I* is more fluid and organic. The square shaped structure consists of an outward rectangular grid. Looking inward, the grid becomes less rigid and more chaotic. A ladder inside is twisted and broken, falling to the ground.

Just thirty years old, New England artist Adam Waimon's career is taking off at lightning speed. His blown and intricately carved glass forms exhibit a technical mastery that belies his years. The "Carved" series consists of sculptural groupings inspired by such diverse themes as botany, microbiology and Art Deco. The minimalist groupings are saturated in rich monochromatic color capitalizing on the negative space created by multiple pieces. Whimsical and bright magenta, *Berry Blossoms* is a pair of deeply carved fruit-like objects toppling toward each other.

The "Channel" series, is an "abstraction of transition and experience of life.

continued on Page 24