

Some Exhibits That Are Still On View

continued from Page 13



Work by Jill Eberle

GreenHill, a space for NC art, in Greensboro, NC, is presenting *ANIMATED!*, a comprehensive overview of the influence of animation on visual arts, on view through Nov. 9, 2013. Curated by Edie Carpenter, the exhibit presents works by 22 artists who investigate animation from 19th century animation devices to the elaboration of original animated worlds. The exhibition explores sequential art from flip books and storyboards to Claymation, and present works on paper as well as digital media. The influence of animation on other art forms including jewelry, pottery, sculpture and painting will also be explored. For further information check our NC Institutional Gallery listings, call the center at 336/333-7460 or visit (www.greenhillnc.org).

The Columbia Museum of Art in Columbia, SC, is still presenting *Figures and Forms: The Glass Sculpture* of Rick Beck, on view through Dec. 8, 2013. Similar to a magician, artist Rick Beck makes us look closely at what we thought we saw, only to see something different than expected, and become surprised, delighted and amazed. In his first one-person exhibition at the CMA, Beck shows figures and forms sure to capture the imaginations of visitors of all ages. Beck creates his glass

sculptures using clay forms to create a silicone mold for recycled glass, which is fired to 1650 degrees Fahrenheit. As the molten glass takes the shape of the mold, it can take anywhere from a couple of weeks to a couple of months to cool to room temperature. For further information check our SC Institutional Gallery listings, call the Museum at 803/799-2810 or visit (www.columbiamuseum.org).



Daddy Longlegs by John Parker

The City of North Charleston Cultural Arts Department is presenting the *8th Annual National Outdoor Sculpture Competition and Exhibition*, on view at the Riverfront Park (former Charleston Naval Base) in North Charleston, SC, through Mar. 2014. The eleven month exhibition features nine established and emerging artists displaying imaginative and thought provoking large-scale sculpture. Visitors can enjoy the sculpture displays among ten acres of walking paths, a fishing pier, boardwalk, playground, and children's play fountain. For further information check our SC Institutional Gallery listings, call the Cultural Arts Department at 843/740-5854 or visit (<http://bit.ly/culturalarts>).

North Carolina Museum of Art in Raleigh, NC, Offers Unprecedented Collection of Porsche Automobiles

The North Carolina Museum of Art (NCMA) in Raleigh, NC, opens its first-ever design exhibition, bringing together the largest and most diverse group of Porsche automobiles ever on display in a US art museum. *Porsche by Design: Seducing Speed* features more than 20 automobiles that together trace the evolution of the singular Porsche design aesthetic from its inception in the 1930s through the present day, on view from Oct. 12 through Jan. 20, 2014. The exhibition was organized by guest curator Ken Gross, a renowned automotive journalist and the former director of the Petersen Automotive Museum in Los Angeles. The NCMA's Barbara Wiedemann is managing curator.

Beginning with the crisp minimalism of the 1938 Type 64 Berlin-Rom Racer - the oldest model featured in the exhibition - the cars on display show the evolution of the signature design principles that have long linked Porsche with beauty, artistry, technology, and innovation. Other examples include the aerodynamic design that was the hallmark of the Formula One race cars of the 1960s, and the technical innovation and advancements that were introduced with contemporary models such as the 911 Carrera.

"*Porsche by Design* brings together one of the most significant collections of Porsche automobiles ever assembled," said Ken Gross. "More than 'just a show about cars,' the exhibition emphasizes the innate beauty of aerodynamic design, inseparably linked with engineering genius. It further illustrates the Porsche family's



Porsche Type 356A Speedster 1600 Super, 1958, Collection of Chad McQueen, Photograph © 2013 Peter Harholdt

ability to stay true, over many decades, to a powerful design history while remaining on the forefront of technological advances, continually driving automobile design forward. These cars are superlative examples of uncompromised, artfully restrained design, lending visual form and grace to the notion of speed."

Highlights of *Porsche by Design* include:

The 1938/39 Type 64 Berlin-Rom racer designed by Porsche founder Dr. Ferdinand Porsche; it is the precursor to all Porsche automobiles manufactured after 1948.

A handcrafted 1949 Gmünd coupe designed by Dr. Porsche's son "Ferry" Porsche, one of about 50 aluminum-bodied sports cars from the first Porsche "factory," a converted sawmill in Gmünd, Austria.

Steve McQueen's iconic Porsche Speedster, a Type 356A from 1958, synonymous with the late Golden Age in Hollywood, on loan to the Museum from his son Chad McQueen.

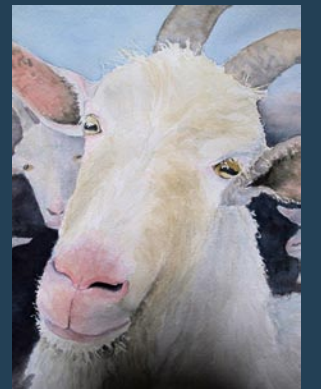
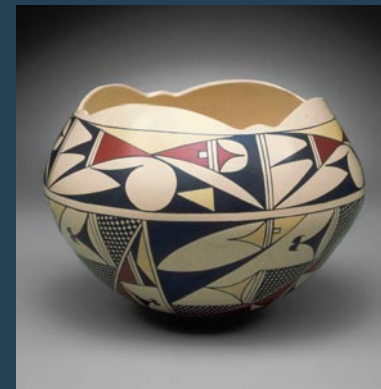
continued above on next column to the right



Alamance Studio Tour
Oct 12-13, 2013



49 Artists
26 Venues



Sat. Oct 12, 10 am – 5 pm
Sun. Oct 13, 12 noon – 5 pm
AlamanceStudioTour.com

A rare Type 804 Formula One race car, one of only four of this model ever built, and the car that Dan Gurney raced to victory at the Austrian Grand Prix.

Janis Joplin's psychedelic Porsche Type 356C, on loan to the NCMA from the Rock and Roll Hall of Fame and Museum.

A Porsche GT3R hybrid race car prototype from 2010.

"At the NCMA we are continually looking for ways to engage our audience with exhibitions and installations that help interpret the world around us through the lens of art and design," said Lawrence J. Wheeler, director of the North Carolina Museum of Art. "*Porsche by Design* traces the evolution of these magnificent automobiles, but by virtue of putting them in a museum setting, we are challenged to see them in a different way: as objects of beauty that transcend their use for transportation."

To provide a more in-depth experience, the Museum will release a series of short-format videos featuring interviews with Porsche collectors, historians, and enthusiasts, including Jay Leno, Derek Bell, Dan Neil, Harm Lagaij, Ken Gross, and Robert Cumberford. The videos include archival images of the Porsche family, a close look at signature Porsche design details, and footage of historic car races.

The Museum is also partnering with the College of Design at North Carolina State University (NCSU) to offer two for-credit courses created around *Porsche by Design*. "Special Topics in Industrial Design: Cultivating Creativity" and "Special Topics in Industrial Design: Innovation by Design" will be taught at the Museum by NCSU faculty, and students across the state may register for the courses. The Museum is working with NCSU and other colleges in the state on additional programs throughout the run of the exhibition.

The Museum is also producing a full-color exhibition catalogue with photographs by Michael Furman and Peter Harholdt. The catalogue features essays by Ken Gross, Robert Cumberford, Jeff



Porsche Type 356C Cabriolet, 1965, Collection of the Joplin Family, Courtesy of the Rock and Roll Hall of Fame and Museum, Cleveland, Ohio, Photograph © 2013 Peter Harholdt

Zwart, Karl Ludvigsen, Randy Leffingwell, Miles C. Collier, Cam Ingram, Cameron Healy, Denise McCluggage, Derek Bell, Pete Lyons, Dan Neil, and Michael Mauer.

This exhibition is made possible, in part, by the North Carolina Department of Cultural Resources; the North Carolina Museum of Art Foundation, Inc.; and the William R. Kenan Jr. Endowment for Educational Exhibitions.

Support for *Porsche by Design: Seducing Speed* is provided by Porsche Cars North America. Sponsors also include Jiffy Lube; Performance Porsche; Quintiles; Wells Fargo; The Private Bank; and Peter Millar. Media support is provided by Capitol Broadcasting Company.

The North Carolina Museum of Art's permanent collection spans more than 5,000 years, from ancient Egypt to the present, making the institution one of the premier art museums in the Southeast. The Museum's collection provides educational, aesthetic, intellectual, and cultural experiences for the citizens of North Carolina and beyond. The 164-acre Museum Park showcases the connection between art and nature through site-specific works of environmental art. The Museum offers changing national touring exhibitions, classes, lectures, family activities, films, and concerts.

For further information check our NC Institutional Gallery listings or visit (www.ncartmuseum.org). For further info about the exhibit visit (www.ncartmuseum.org/porsche).